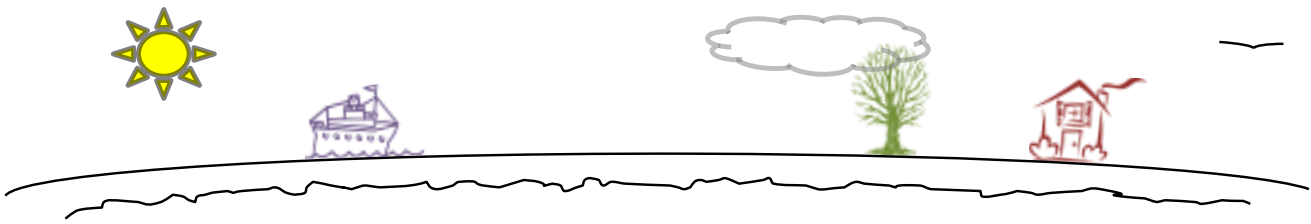


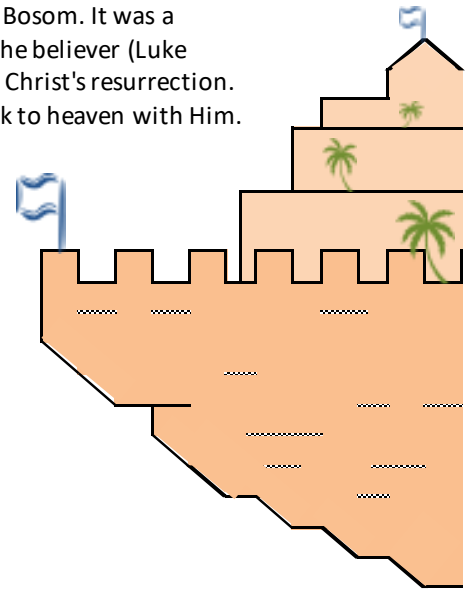
The Netherworld

#29

A visualization of the spirit realm, or realm of the dead, under the earth (Ezek Ch 31 & 32)



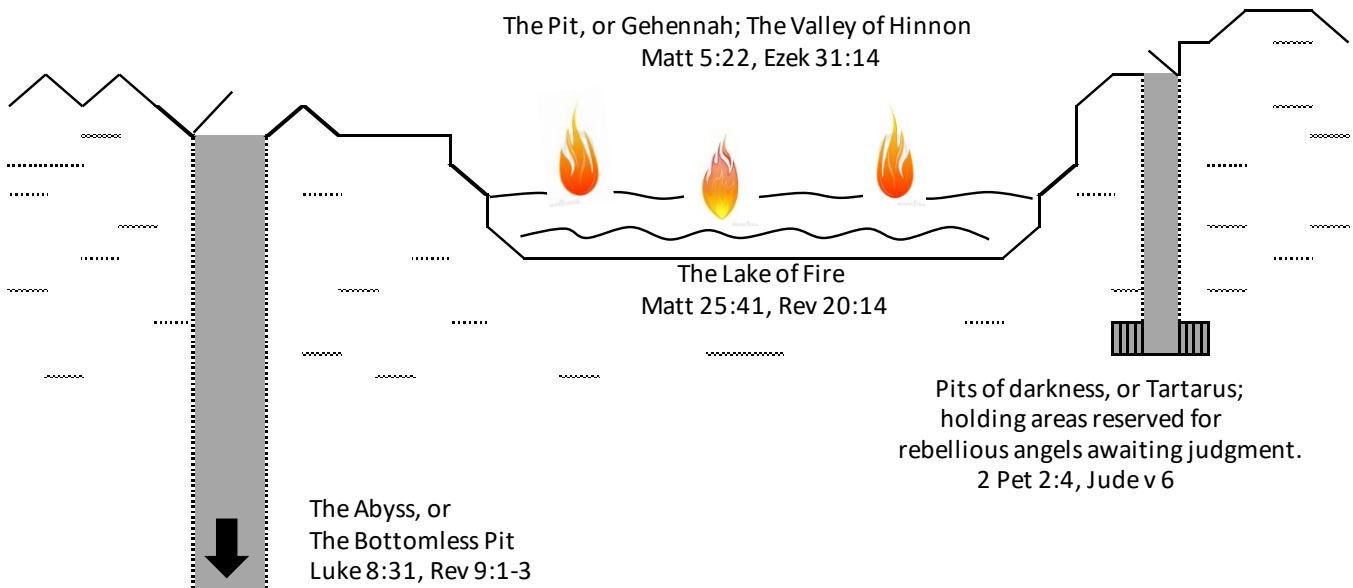
The Netherworld included Paradise, or Abraham's Bosom. It was a spiritual place of rest, after death, for the soul of the believer (Luke 16:19-31). It was located in the Netherworld until Christ's resurrection. At that time, He brought everyone in Paradise back to heaven with Him.



Outer Darkness
Matt:8:12

Hell is a literal place, but in a spiritual dimension; tangible, but not material or visible. It is located in the lowest parts of the Netherworld, and is the eternal habitation for the soul of the unbeliever.
Hell = Sheol (Hebrew) or Hades (Greek)

The Pit, or Gehennah; The Valley of Hinnon
Matt 5:22, Ezek 31:14



The Lake of Fire
Matt 25:41, Rev 20:14

Pits of darkness, or Tartarus;
holding areas reserved for
rebellious angels awaiting judgment.
2 Pet 2:4, Jude v 6

The Abyss, or
The Bottomless Pit
Luke 8:31, Rev 9:1-3

The Abyss holds Appolyon's tormenting spirits.
Also, during the Millennium, Satan will be confined here.